

Pacific®

*The standard choice in smooth surface,  
value for money tiles.*

activeceilings®

ROCKWOOL  
**Rockfon®**  
ACTIVATE YOUR CEILING

# Pacific®


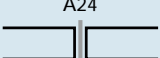

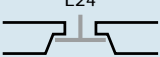
The standard choice in smooth surface, value for money tiles.

Pacific is ideally suited to a simple, basic ceiling when standard sound absorption is required.

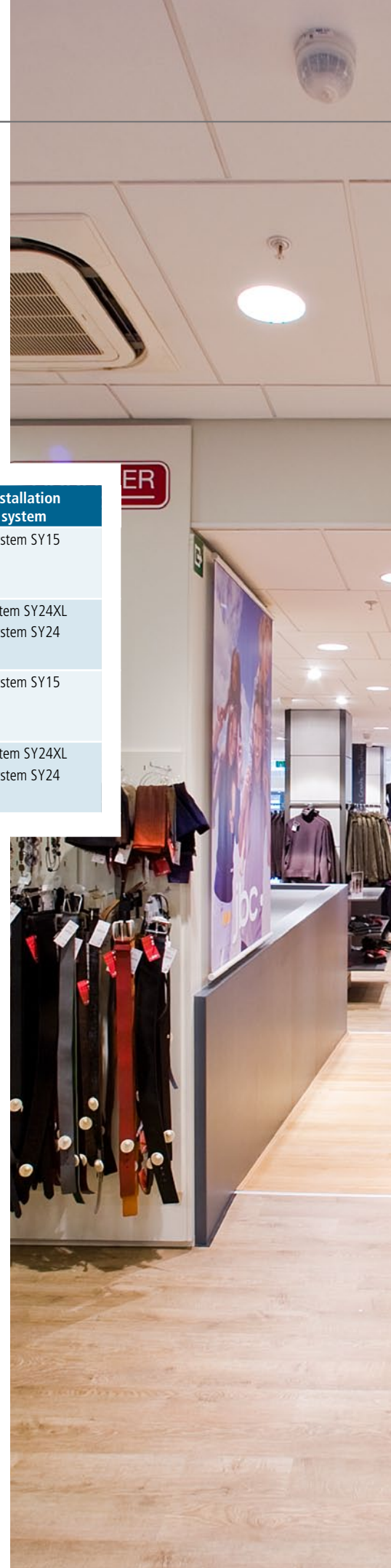
Less than half the weight of traditional ceiling tiles, Pacific is easy to carry, cut and install.

It is available with E-edges for a semi-concealed look and A-edges for an exposed grid application.

## ASSORTMENT

Edge detail	Module size (mm)	Weight (kg/m <sup>2</sup> )	MS* easy access (mm)	Installation system
A15 	600 x 600 x 15	1.9	100	System SY15
A24 	600 x 600 x 15 1200 x 600 x 15	1.9 1.9	100 100	System SY24XL System SY24
E15 	600 x 600 x 15	2.4	100	System SY15
E24 	600 x 600 x 15 1200 x 600 x 15	2.4 2.4	100 100	System SY24XL System SY24

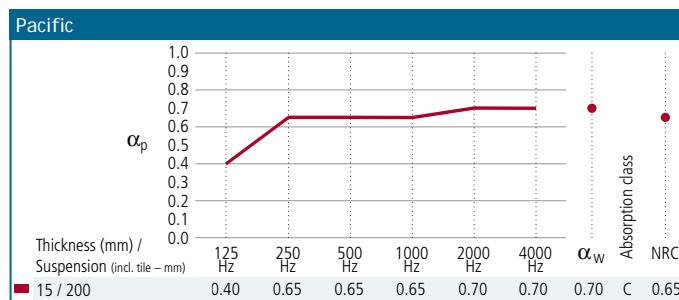
\* MS - Minimum Suspension





### SOUND ABSORPTION

Sound absorption has been measured in accordance with ISO 354. Sound absorption data  $\alpha_p$ ,  $\alpha_w$  and absorption class are calculated in accordance with ISO 11654. Noise Reduction Coefficient (NRC) is calculated in accordance with ASTM C423.



### FIRE PERFORMANCE

**General:** Rockfon ceiling tiles have a core of stone wool. Stone wool is non-combustible with a melting point of more than 1000°C.

**Reaction to fire:** Class A1 in accordance with EN 13501-1.

**Fire protection:** The fire resistant properties of stone wool ensure Rockfon ceiling tiles provide fire protection in construction. The fire protection properties of Rockfon ceilings have been tested and classified in accordance with European norm EN 13501-2 and/or national norms depending on requirements in national building codes.



### HUMIDITY RESISTANCE AND DIMENSIONAL STABILITY (FLEXURAL TENSILE STRENGTH)

Rockfon ceiling tiles are dimensionally stable even at humidity levels of up to 100% RH and can be installed at all temperatures ranging from 0°C to 40°C. No acclimatisation is necessary.

Pacific is classified as Class 1/C/ON in accordance with EN 13964. However, certain module sizes (width above 700 mm) are class [2/C/ON]



### LIGHT REFLECTION

White, 85% diffuse light reflection in accordance with ISO 7724-2.



### HYGIENE

Stone wool has no nutritional value and therefore it provides no sustenance to harmful micro-organisms.



### CLEANING

The surface can be vacuum cleaned with a soft brush attachment.



### AFTERCARE

The tiles can be post factory treated with a re-finishing paint, e.g. a PVA water based latex paint. The paint should be applied with an airless spray in a low amount (no brushing or rolling). Rockfon advises the use of the smallest amount of paint in order to minimise reduction in sound absorption. The surface of the tiles must be clean and dry and the existing paint surface must be firmly adhered to the tile prior to refinishing. Heavily discoloured tiles should be replaced.

Disclaimer: The application of refinishing paint will influence acoustic properties and fire safety performance. Rockfon takes no responsibility for these properties after treatment.



### ENVIRONMENT

A representative selection of Rockfon products have been awarded the Danish Indoor Climate Label and the Finnish Indoor Climate Label (M1).

Pacific is recyclable.

